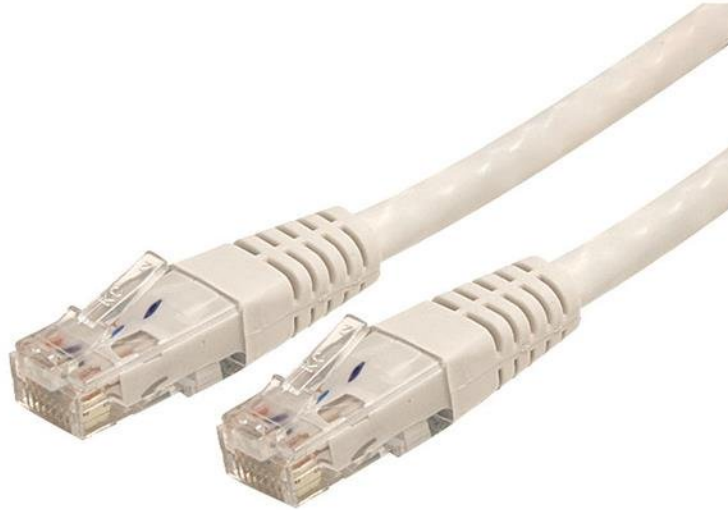


3m Cat 6 gegoten RJ45 UTP Gigabit netwerkkabel - Cat6 Patchkabel wit

Product ID: C6PATCH10WH



The C6PATCH10WH Cat 6 Patch Cable (10 ft) meets or exceeds all Category 6 cable specifications to ensure reliable Gigabit network connections, and features a durable white PVC jacket that enables you to color code your network cable runs as needed.

To ensure long-lasting performance, this high quality Cat 6 patch cable features molded PVC strain relief that prevents the RJ45 connector termination points from bending at sharp angles - reducing the risk of cable damage, which could decrease network performance.

Constructed of only top quality materials, this Gigabit Patch Cable delivers reliable performance and is backed by our Lifetime Warranty.

100% Copper - a better value

StarTech.com Cat6 cables are manufactured using high-quality copper conductors. While many cable manufacturers offer a "cheaper" cable, based on a copper-coated aluminum core, we make no compromises on quality to ensure you receive top value and performance for your network cable investment.

24 AWG Wire

This Cat6 cable is constructed with 24 gauge copper wire, to support a broad range of Ethernet applications such as Power over Ethernet (PoE). Because we use a high quality copper wire, our cables easily sustain the power required for Power over Ethernet applications, whereas the inferior quality offered by copper-coated aluminum cables may be subject to insufficient power delivery, heat buildup, equipment damage and potentially, fire.

50-micron Gold Connectors

This molded patch cable offers high quality connectors comprised of 50-micron gold, to deliver optimum conductivity while eliminating signal loss due to oxidation or corrosion.

Certificaties, rapporten en compatibiliteit



Toepassingen

- Designed for use with Gigabit networks
- Patches from hub to distribution panel
- Connects workstation to wall outlet

Eigenschappen

- Molded RJ45 connectors
- Carefully constructed and tested, to keep Near End Crosstalk (NEXT) well within acceptable limits
- Colored hoods for departmental color coding
- Constructed with top quality components
- High quality 24 AWG copper wire
- ETL Verified

Hardware	Warranty	Lifetime
	Aantal geleiders	4 Pair UTP
	Brandbestendigheid	CMG goedgekeurd (algemeen doel)
	Kabelstandaard	TIA/EIA-568-B.1-2001 T568B
	Type kabel	Gegoten
	Type kabelmantel	PVC - Polyvinyl Chloride
Prestaties	Kabelspecificatie	CAT6 - 650 MHz
Connector(en)	Connector A	1 - RJ-45 Mannelijk
	Connector B	1 - RJ-45 Mannelijk
Fysieke eigenschappen	Draaddikte	24 AWG
	Gewicht product	133 g [4.7 oz]
	Kabellengte	3 m [10 ft]
	Kleur	Wit
	Lengte product	3 m [10 ft]
	Type geleider	Gevlochten koper
Verpakkingsinformatie	Package Height	18 mm [0.7 in]
	Package Length	22 cm [8.7 in]
	Package Width	20 cm [7.9 in]
	Verzendgewicht (verpakt)	142 g [5 oz]
Wat wordt er meegeleverd	Meegeleverd	10 ft. Cat6 Patch Cable - White

Uitvoering en specificaties van het product zijn zonder aankondiging vatbaar voor wijzigingen.